



GAT MONTHLY MEMBERSHIP PROGRESS REPORT

Results as of: 12/31/2022

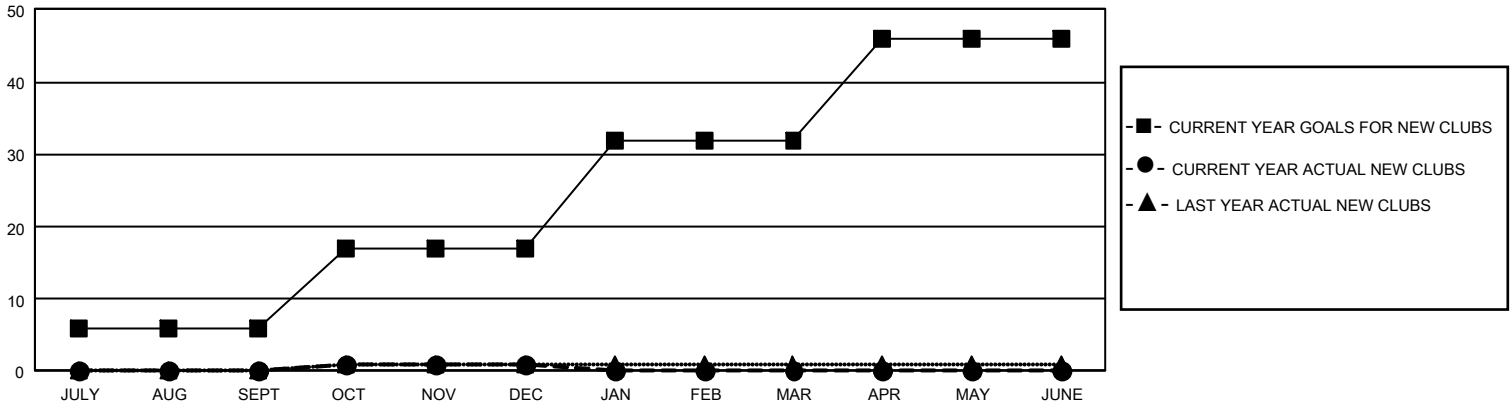
GMT Constitutional Area 4, Group A

REPORT DOES NOT INCLUDE CLUBS IN UNDISTRICTED AREAS.

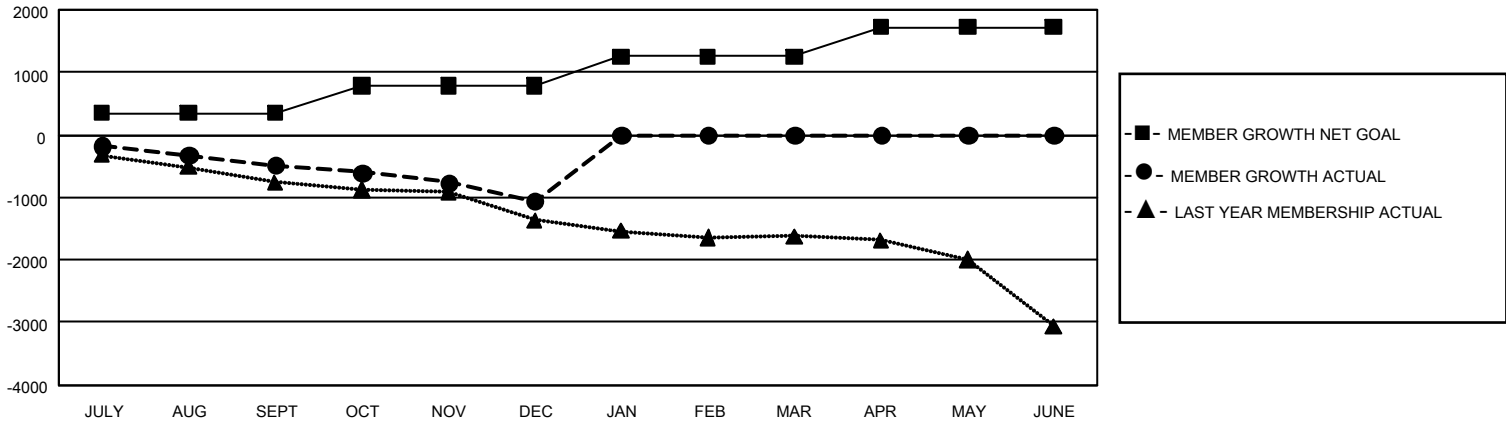
Clubs			
RESULTS FOR 2022-2023			
QUARTER	NEW CLUB GOAL	NEW CLUBS	DROPPED CLUBS
JULY/AUG/SEPT	18	0	24
OCT/NOV/DEC	33	1	16
JAN/FEB/MAR	45	0	0
APR/MAY/JUNE	42	0	0

Members			
RESULTS FOR 2022-2023			
QUARTER	MEMBER GROWTH NET GOAL	MEMBER GROWTH ACTUAL	DROPPED MEMBERS ACTUAL (including transfers)
JULY/AUG/SEPT	346	387	810
OCT/NOV/DEC	442	703	1,231
JAN/FEB/MAR	466	0	0
APR/MAY/JUNE	466	0	0

GOALS AND ACTUAL NEW CLUBS CUMULATIVE



GOALS AND ACTUAL MEMBERS CUMULATIVE



DROPPED CLUBS: 40	573 CLUBS OF 1,965 ADDED 1 OR MORE NEW MEMBERS	<u>GENDER DISTRIBUTION</u>	
		MALE 31,975 (77.00%) FEMALE 9,550 (23.00%) NON BINARY 0 (0.00%) PREFER NOT TO ANSWER 1 (0.00%)	
<u>DROPPED MEMBERS</u>		CLICK HERE FOR CUMULATIVE MEMBERSHIP DATA	TOTAL FAMILY UNIT MEMBERS 1,569
DECEASED 252 CLUB CANCELLED 158 OTHER 1,633 TOTAL 2,043	FAMILY MEMBERS PAYING HALF DUES 779		